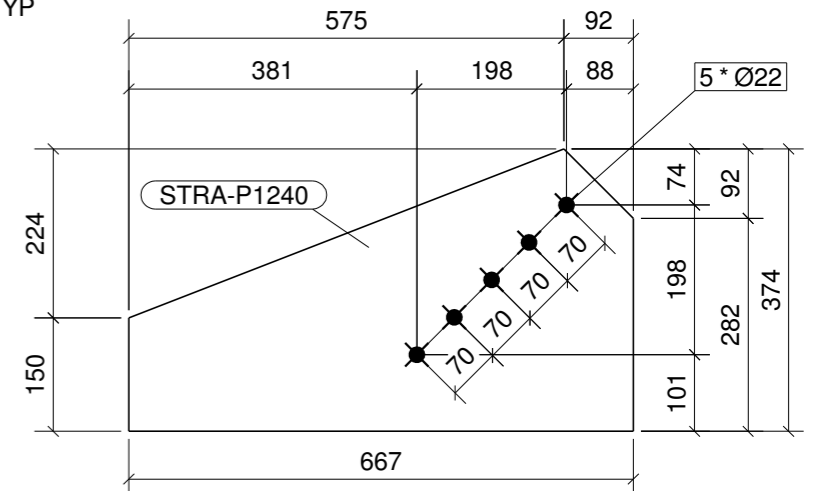
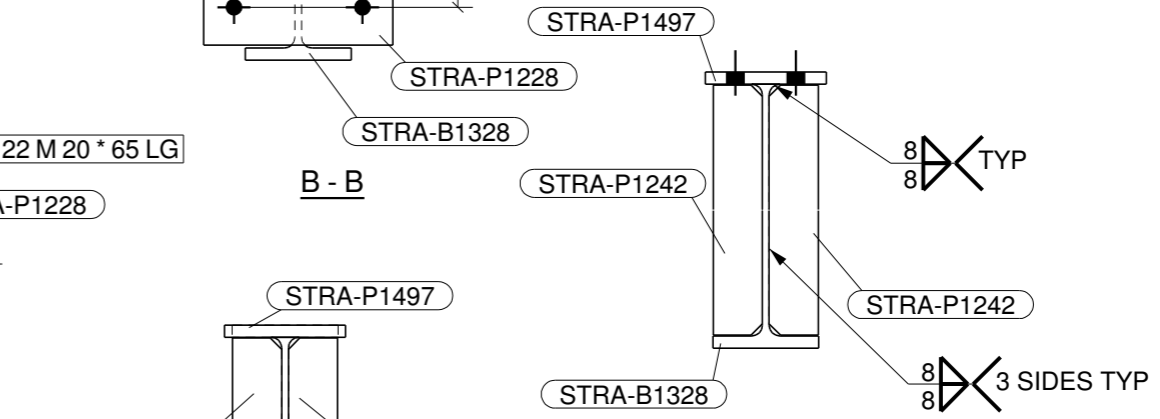


SHOP MATERIAL LIST FOR ONE ASSEMBLY						
MARK	SIZE	GRADE	LENGTH MM	NO	AREA M2	WEIGHT KG
STRA-B1328	ISMB400	IS2062GRA	2141	1	2.74	131.77
STRA-P1228	PLT16*250	IS2062GRA	350	1	0.19	10.99
STRA-P1240	PLT16*373.6	IS2062GRA	667	1	0.25	31.30
STRA-P1242	PLT16*65	IS2062GRA	366	10	0.02	29.88
STRA-P1497	PLT16*160	IS2062GRA	200	4	0.03	16.08
Total					3.2	220.01

LOCATION LIST	
MARK NO	GRID LOCATION
STRA-B1328	7-8/Q EL +126.675

BOLT LIST FOR ASSEMBLY STRA-B1328 No. 1					
Diam	Grade	Type	Length	No	Member
20	8.8XOX	Site	65.0	8	STRA-C1041



NOTES:
 ALL DIMENSIONS ARE IN mm (UNO).
 ALL WELDS ARE 6mm FILLET (UNO).

1 BEAM REQUIRED AS DRAWN MARKED STRA-B1328

REV.	DATE	REVISIONS	BY	CHKD	APPD	PEMPC
1	28.09.10	GENERALLY REVISED	SRS	KK	JRR	
0	06.05.10	ISSUED FOR FABRICATION	SRS	KK	JRR	

इंजीनियर्स इंडिया लिमिटेड ENGINEERS INDIA LIMITED
 (भारत सरकार का उपक्रम) (A Govt. of India Undertaking)

मैंगलौर रिफाइनरी एवं पेट्रोकेमिकल्स लिमिटेड
 MANGALORE REFINERY & PETROCHEMICALS LTD.

CONTRACTOR **CONSOLIDATED CONSTRUCTION CONSORTIUM LTD.**
 REGISTERED OFF: #5 - 2nd LINK STREET, C.I.T COLONY MYLAPORE, CHENNAI - 600 004 INDIA

PROJECT **PHASE-III REFINERY PROJECT MANGALORE**

TITLE **PFCC / PR UNIT- TECH STRUCTURE A**
DETAIL OF BEAM

SCALE	JOB NO.	UNIT	DIVN.	DEPT.	DWG. NO.	REV.
1:10	6 9 9 3	3 3 3	1 1 6	4 8	STRA-B1328	1