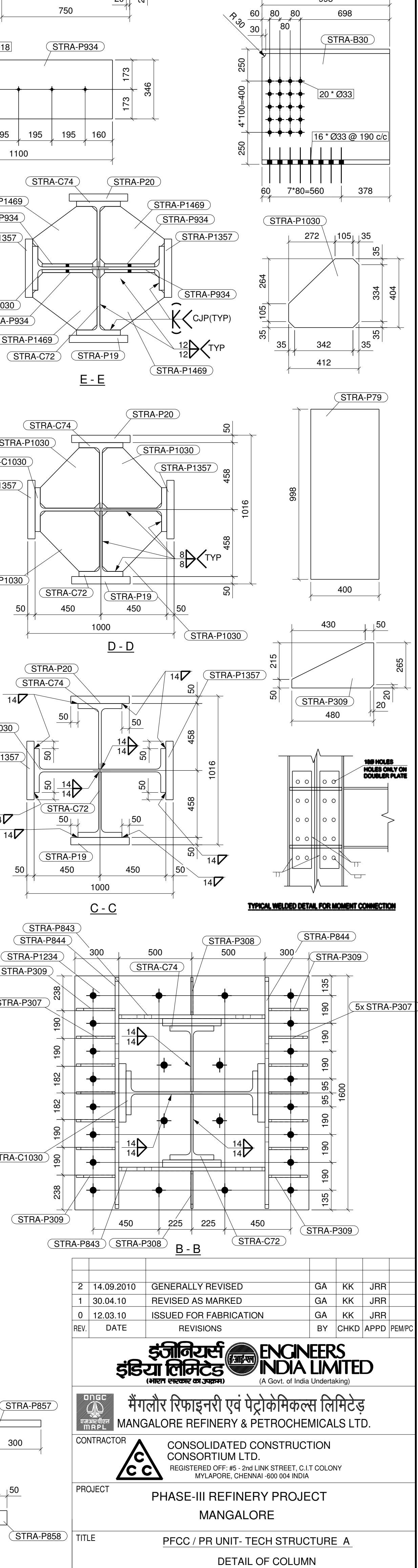


SHOP MATERIAL LIST FOR ONE ASSEMBLY						
MARK	SIZE	GRADE	LENGTH MM	NO	AREA M2	WEIGHT KG
STRA-B30	WPB900*300*291	IS2062GRA	998	2	2.55	581.45
STRA-C72	WPB900*300*291_T	IS2062GRA	10623	1	27.19	1547.99
STRA-C74	WPB900*300*291_T	IS2062GRA	10623	1	27.19	1547.99
STRA-C84	WPB900*300*291	IS2062GRA	10623	1	27.19	3095.94
STRA-P19	PLT50*400	IS2062GRA	10125	1	9.15	1589.62
STRA-P20	PLT50*400	IS2062GRA	10125	1	9.15	1589.62
STRA-P77	PLT50*400	IS2062GRA	998	2	0.94	313.22
STRA-P79	PLT50*400	IS2062GRA	998	2	0.94	313.22
STRA-P307	PLT16*265	IS2062GRA	750	10	0.20	249.63
STRA-P308	PLT16*257	IS2062GRA	750	2	0.19	48.42
STRA-P309	PLT16*265	IS2062GRA	480	4	0.13	63.91
STRA-P363	PLT10*290.8	IS2062GRA	359	2	0.10	16.38
STRA-P843	PLT25*800	IS2062GRA	1000	2	0.80	314.00
STRA-P844	PLT25*800	IS2062GRA	1580	2	1.26	496.12
STRA-P857	PLT6*40	IS2062GRA	300	2	0.03	1.13
STRA-P858	PLT6*50	IS2062GRA	85	4	0.01	0.80
STRA-P934	PLT20*345.8	IS2062GRA	1100	4	0.38	238.84
STRA-P1030	PLT10*403.8	IS2062GRA	412	32	0.17	417.61
STRA-P1234	PLT50*1600	IS2062GRA	1600	1	2.56	1004.80
STRA-P1357	PLT50*400	IS2062GRA	10125	2	9.15	3179.25
STRA-P1469	PLT60*391.8	IS2062GRA	439	8	0.17	647.65
				Total	119.5	17257.5

LOCATION LIST	
MARK NO	GRID LOCATION
STRA-C1030	9/C EL+110.973

BOLT LIST FOR ASSEMBLY STRA-C1030 No. 1			
Diam	Grade	Type	Length
			Member



1 COLUMN REQUIRED AS DRAWN MARKED STRA-C1030

NOTES:
ALL DIMENSIONS ARE IN mm (UNO).
ALL WELDS ARE 6mm FILLET (UNO).

SCALE	JOB NO.	UNIT	DIVN.	DEPT.	DWG. NO.	REV.
1:10	6	9	3	3	3	1
						1
						6
						4
						8
						STR-A-C1030
						2