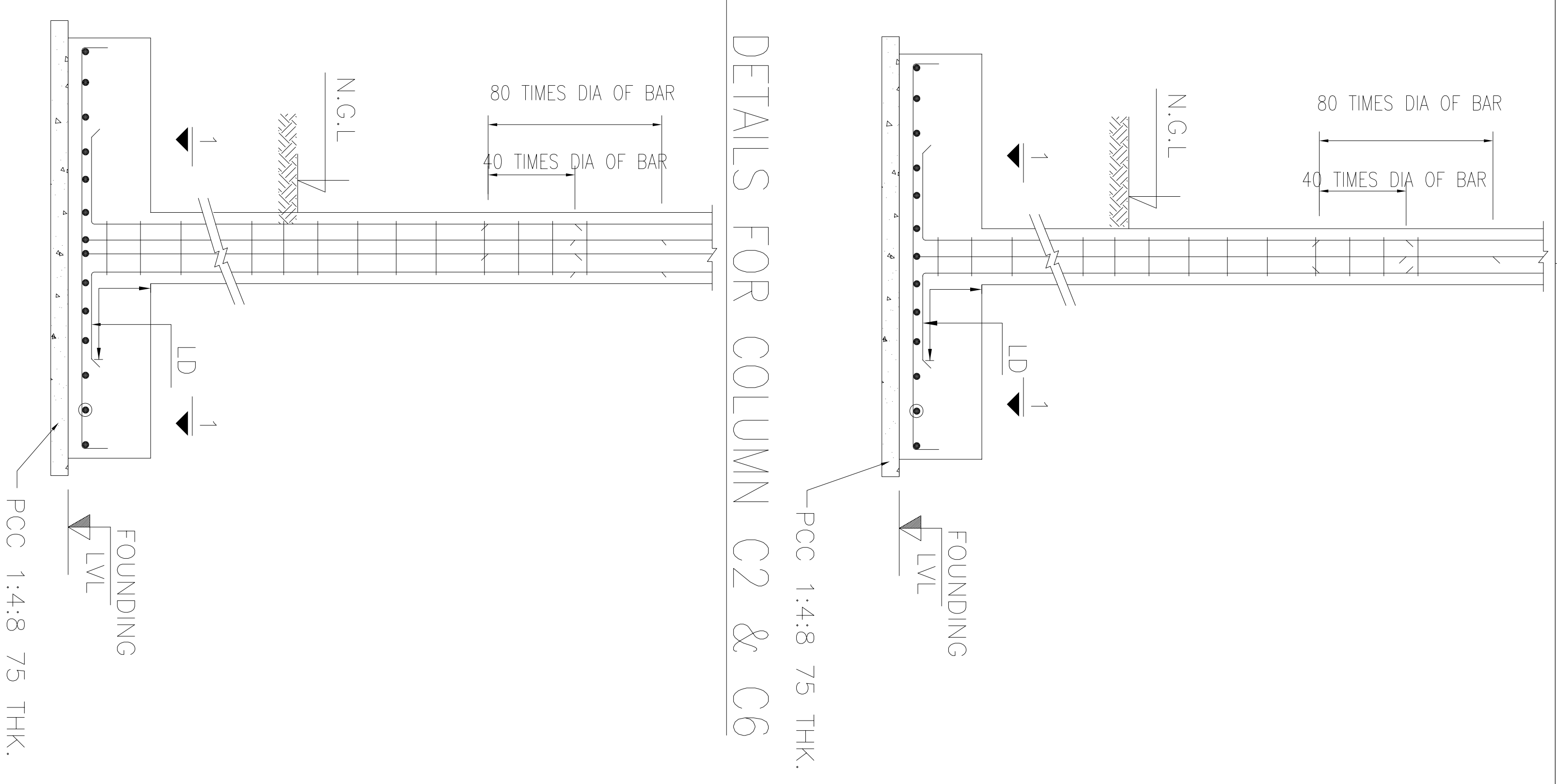


COLUMN LAYOUT

TYPE	NOS.	SEC. 1-1	REINFORCEMENTS	SEC. 1-1	REINFORCEMENTS
		FOR G.F AND F.F	FOR G.F AND F.F	FOR S.F AND T.F	FOR S.F AND T.F
C1	2		① - ● 12-Y12 Y8Ø 8°C/C 3-TIES ② ③ & ④		① - ● 12-Y12 Y8Ø 8°C/C 3-TIES ② ③ & ④
C2	2		⑤ - ● 12-Y16 Y8Ø 8°C/C 3-TIES ⑥ ⑦ & ⑧		⑨ - ● 12-Y12 Y8Ø 8°C/C 3-TIES ⑩ ⑪ & ⑫
C3	4		⑬ - ● 8-Y25 Y8Ø 8°C/C 3-TIES ⑭ ⑮ & ⑯		⑰ - ● 8-Y16 Y8Ø 8°C/C 3-TIES ⑱ ⑲ & ⑳
C4	5		㉑ - ● 4-Y16 Y8Ø 8°C/C 3-TIES ㉒ ㉓ & ㉔		㉕ - ● 12-Y12 Y8Ø 8°C/C 3-TIES ㉖ ㉗ & ㉘
C5	4		㉙ - ● 4-Y20 ① - ● 8-Y12 Y8Ø 8°C/C 3-TIES ② ③ & ④		⑤ - ● 12-Y12 Y8Ø 8°C/C 3-TIES ⑥ ⑦ & ⑧

TYPE	NOS.	SEC. 1-1	REINFORCEMENTS	SEC. 1-1	REINFORCEMENTS
		FOR G.F AND F.F	FOR G.F AND F.F	FOR S.F AND T.F	FOR S.F AND T.F
C6	5		⑲ - ● 12-Y16 Y8Ø 8°C/C 3-TIES ⑳ ㉑ & ㉒		⑳ - ● 4-Y16 ④ - ● 8-Y12 Y8Ø 8°C/C 3-TIES ⑤ ⑥ & ⑦
C7	3		④ - ● 4-Y20 ④ - ● 8-Y12 Y8Ø 8°C/C 2-TIES ⑤ ⑥ & ⑦		⑧ - ● 12-Y12 Y8Ø 8°C/C 3-TIES ⑨ ⑩ & ⑪
C8	3		⑦ - ● 4-Y20 ⑦ - ● 4-Y20 Y8Ø 8°C/C 2-TIES ⑧ ⑨ & ⑩		⑫ - ● 12-Y12 Y8Ø 8°C/C 3-TIES ⑬ ⑭ & ⑮
C9	2		⑫ - ● 4-Y20 Y8Ø 8°C/C 2-TIES ⑬ ⑭ & ⑮		⑯ - ● 12-Y12 Y8Ø 8°C/C 3-TIES ⑰ ⑱ & ⑲

TYP LAP DETAILS FOR COLUMN C2 & C6



TYP LAP DETAILS FOR COLUMNS C1,C3,C4&C5.

- NOTES:
1. ALL DIMENSIONS ARE IN "FOOT AND INCHES"
 2. GRADE OF CONCRETE SHALL BE M20
 3. CLEAR COVER TO ALL REINFT. COLUMNS - 1 1/2"
 4. Y - DENOTES HYSD BARS CONFORMING TO IS: 1786 - 1983
 5. LAP LENGTH SHALL BE 40 TIMES THE DIA OF BAR AND 50% OF THE BARS SHALL BE STAGGERED
 6. READ THIS Dwg ALONGWITH RELAVANT ARCH. Dwg. DISCREPANCY IF ANY SHOULD BE BROUGHT TO THE NOTICE OF THE ENGINEER.

SLNO	REV.	DATE	DESCRIPTION	SIGN
1.	R0	17-04-2006	RELEASED FOR CONSTRUCTION	VDR
2.	R1	02-05-2006	RELEASED FOR CONSTRUCTION	VDR

PROJECT:-
PROPOSED SCHOOL BUILDING
AT SOLINGANALLUR.

CLIENT:-
MR.CHANDRASEKAR.

TITLE:-
COLUMN LAYOUT

SHEET 1 OF 1

DRAWN	VDR	CHECKED	AS	DATE :	17-04-2006
DESIGNED	AS	APPROVED	RSR	SCALE	1:8

DWG.NO:- YD/PRO/CS/RC/03