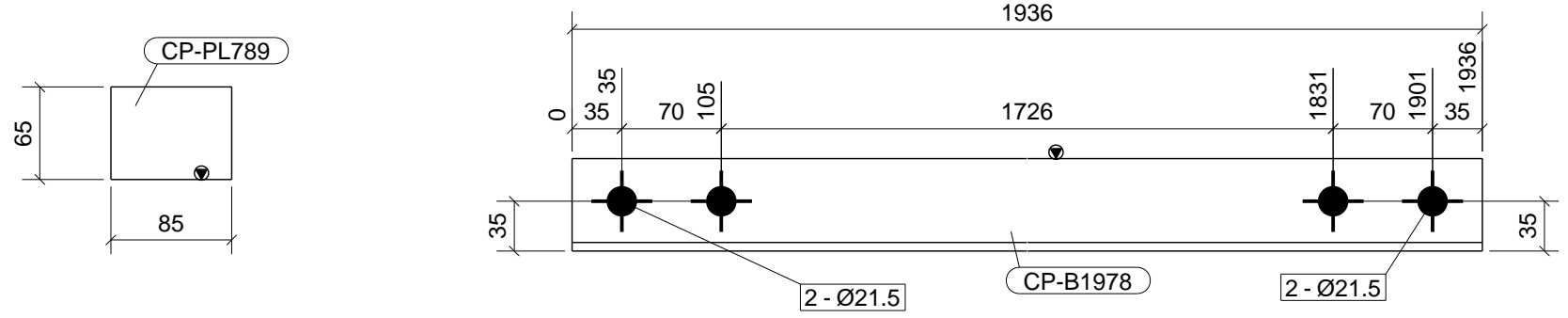
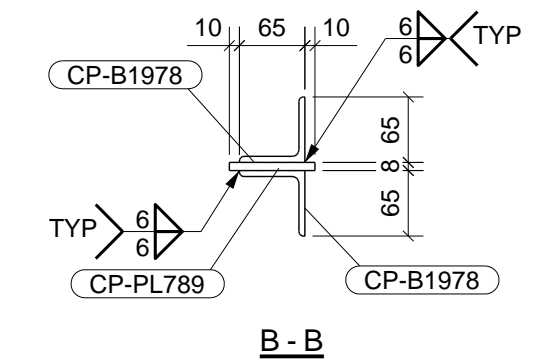
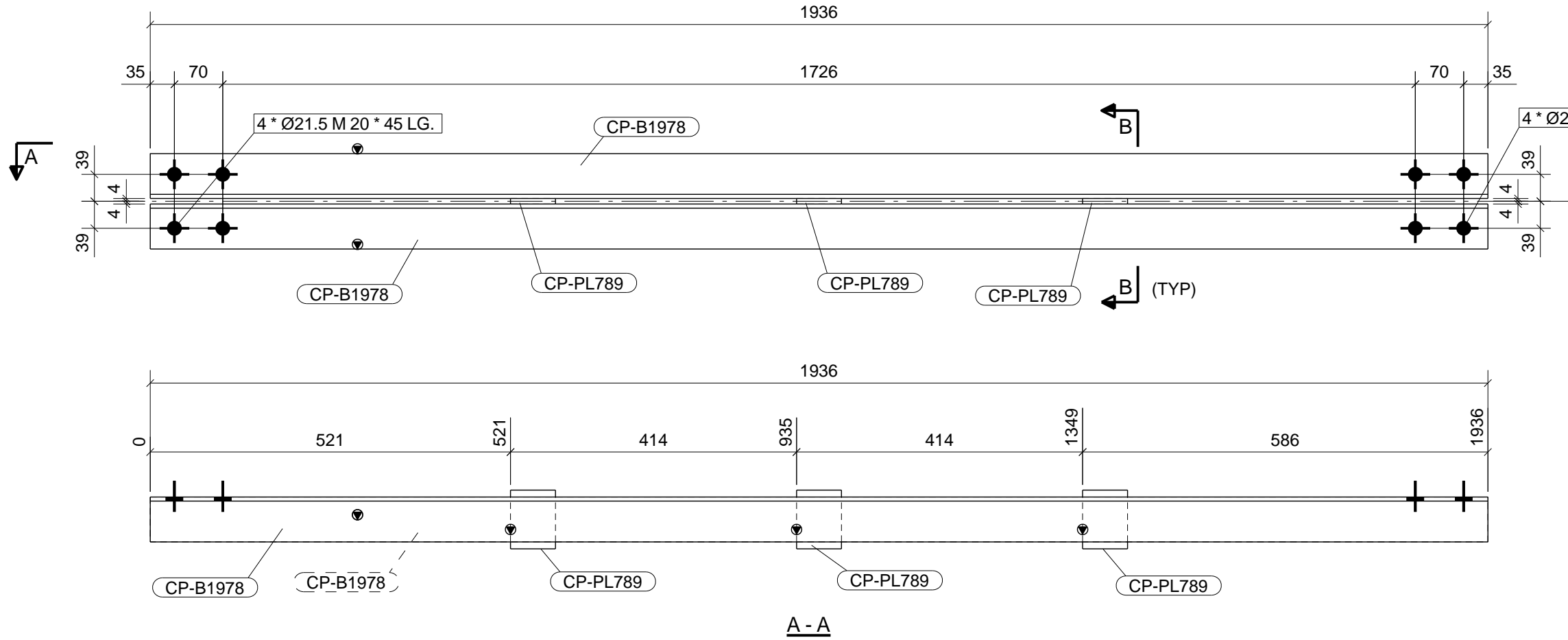


SHOP MATERIAL LIST FOR ONE ASSEMBLY						
MARK	SIZE	GRADE	LENGTH MM	NO	AREA M2	WEIGHT KG
CP-B1978	ISA65X65X6	FE410WA	1936	2	0.49	22.61
CP-PL789	PLT8*65	FE410WA	85	3	0.01	1.04
Total					0.5	23.65

BOLT LIST FOR ASSEMBLY JM-CP-BCBR90 No. 1					
Diam	Grade	Type	Length	No	Member
20	8.8XOX	Site	45.0	4	JM-CP-BCBR106
20	8.8XOX	Site	45.0	4	JM-CP-T37

LOCATION LIST	
MARK NO	GRID LOCATION
JM-CP-BCBR90	<A/2-3 EL +5.442



NOTES :-  
 1. ALL DIMENSIONS ARE IN mm.(UNO)  
 2. ALL LEVELS ARE IN m.(UNO)  
 3. FOR GENERAL NOTES, PLEASE REFER DRAWING NO. - 1655-06-6500-L001

1 BOT.CHORD BRACING REQUIRED AS DRAWN MARKED JM-CP-BCBR90

REF. DWG. NO.	REFERENCE DRAWING TITLE
1655-06-6102-E-001	COLUMN MARKING LAYOUT AT 0.625
1655-06-6102-E-020	ELEVATION ALONG GRID - C' & D
1655-06-6102-E-003	ELEVATION ON GRID - A&G
1655-06-6102-E-004	ELEVATION ALONG GRID - B & C BETWEEN GRID 1 & 2
1655-06-6102-E-005	ELEVATION ALONG GRID - D & E BETWEEN GRID 1 & 2
1655-06-6102-E-006	ELEVATION ALONG GRID - F BETWEEN GRID 1 & 5
1655-06-6102-E-007	PLAN SHOWING TRUSSES, TOP AND BOTTOM CHORD BRACING
1655-06-6102-E-008	MARKING LAYOUT OF ROOF PURLIN BETWEEN GRID 1 & 2
1655-06-6102-E-009	PLAN SHOWING TRUSSES, TOP AND BOTTOM CHORD BRACING
1655-06-6102-E-010	ELEVATION ALONG GRID - D & E BETWEEN GRID 2 & 3
1655-06-6102-E-011	ELEVATION ALONG GRID - B & C BETWEEN GRID 2 & 3
1655-06-6102-E-012	MARKING LAYOUT OF ROOF PURLIN BETWEEN GRID 2 & 3
1655-06-6102-E-013	MARKING LAYOUT OF ROOF PURLIN BETWEEN GRID 3 & 5
1655-06-6102-E-014	PLAN SHOWING TRUSSES, TOP AND BOTTOM CHORD BRACING
1655-06-6102-E-015	ELEVATION ALONG GRID - 3
1655-06-6102-E-016	ELEVATION ALONG GRID - 4
1655-06-6102-E-017	ELEVATION ALONG GRID - 5
1655-06-6102-E-018	ELEVATION ALONG GRID - A, A' 5' & 6'
1655-06-6102-E-019	ELEVATION ALONG GRID - B, B & C

CONSULTANT  
**AkerSolutions™**  
 Powergas House, iTHINK Techno Campus, Kanjur Marg (East), Mumbai 400 042, India

CLIENT  
**JM** **JOHNSON MATTHEY** Chemicals India Pvt. Ltd.  
 C/o ICI INDIA LTD. Panki Works.

CONTRACTOR  
**CCC** **CONSOLIDATED CONSTRUCTION CONSORTIUM LTD.**  
 REGISTERED OFF: #5 - 2nd LINK STREET, C.I.T COLONY MYLAPORE, CHENNAI - 600 004 INDIA

REV.	DATE	REVISIONS	BY	CHKD	APPD
1	30.07.2010	REVISED AS PER COMMENTS & ISSUED FOR FABRICATION	APK	RJ	JRR
0	12.07.2010	ISSUED FOR APPROVAL	APK	RJ	JRR

PROJECT: JMC PLANT (COLT)  
 TITLE: COLT PLANT  
 DETAIL OF BOT.CHORD BRACING

SCALE	JOB NO.	DWG. NO.	REV.
1:5	DC 67	JM-CP-BCBR90	1