

**SHOP MATERIAL LIST FOR ONE ASSEMBLY**

MARK	SIZE	GRADE	LENGTH MM	NO	AREA M <sup>2</sup>	WEIGHT KG
CP-B400	ISM250	FE410WA	13222	1	10.34	404.82
CP-B401	ISM250	FE410WA	13222	1	10.34	404.82
CP-PL171	PLT20*284.6	FE410WA	380	2	0.24	33.96
CP-PL249	PLT10*217	FE410WA	398	1	0.09	6.78
CP-PL259	PLT10*227.9	FE410WA	410	1	0.09	7.34
CP-PL438	PLT25*380	FE410WA	495	1	0.42	36.93
CP-PL439	PLT25*380	FE410WA	480	1	0.41	35.80
CP-PL442	PLT10*250	FE410WA	265	1	0.07	5.20
CP-PL443	PLT10*250	FE410WA	470	1	0.12	9.22
CP-PL444	PLT10*250	FE410WA	187	4	0.04	14.74
CP-PL618	PLT20*380	FE410WA	559	1	0.46	33.41
CP-PL629	PLT10*250	FE410WA	385	2	0.10	15.13
CP-PL672	PLT12*320.8	FE410WA	638	1	0.20	19.30
CP-PL708	PLT20*380	FE410WA	719	1	0.59	42.96
CP-PL896	PLT30*650	FE410WA	700	1	0.46	107.15
CP-PL900	PLT12*300	FE410WA	178	4	0.03	20.12
CP-PL902	PLT12*400	FE410WA	680	2	0.27	51.24
CP-PL909	PLT16*285	FE410WA	380	1	0.24	13.60
CP-PL910	PLT16*380	FE410WA	430	1	0.35	20.52
CP-PL911	PLT16*240	FE410WA	380	1	0.20	11.45
CP-PL919	PLT6*241.3	FE410WA	390	1	0.20	4.43
CP-PL924	PLT10*240	FE410WA	380	1	0.19	7.16
CP-PL935	PLT8*50	FE410WA	538	44	0.06	74.33
CP-PL936	PLT8*50	FE410WA	457	1	0.05	1.47
CP-PL937	PLT8*50	FE410WA	470	4	0.06	6.01
CP-PL938	PLT8*50	FE410WA	503	2	0.06	3.18
CP-PL939	PLT8*50	FE410WA	466	1	0.06	1.55
CP-PL940	PLT8*50	FE410WA	602	2	0.07	3.88
CP-PL941	PLT8*50	FE410WA	425	2	0.05	2.77
CP-PL1714	PLT10*180	FE410WA	160	5	0.06	11.30
CP-PL1735	PLT10*140	FE410WA	279	5	0.09	15.39
CP-PL1753	PLT10*150	FE410WA	280	5	0.04	16.49
CP-PL1927	PLT10*250	FE410WA	375	1	0.09	7.37
CP-PL1928	PLT10*190	FE410WA	190	1	0.08	2.83
CP-PL3103	PLT8*180	FE410WA	180	1	0.07	2.03
CP-PL3104	PLT8*210	FE410WA	279	1	0.13	3.69
Total					26.4	1458.39

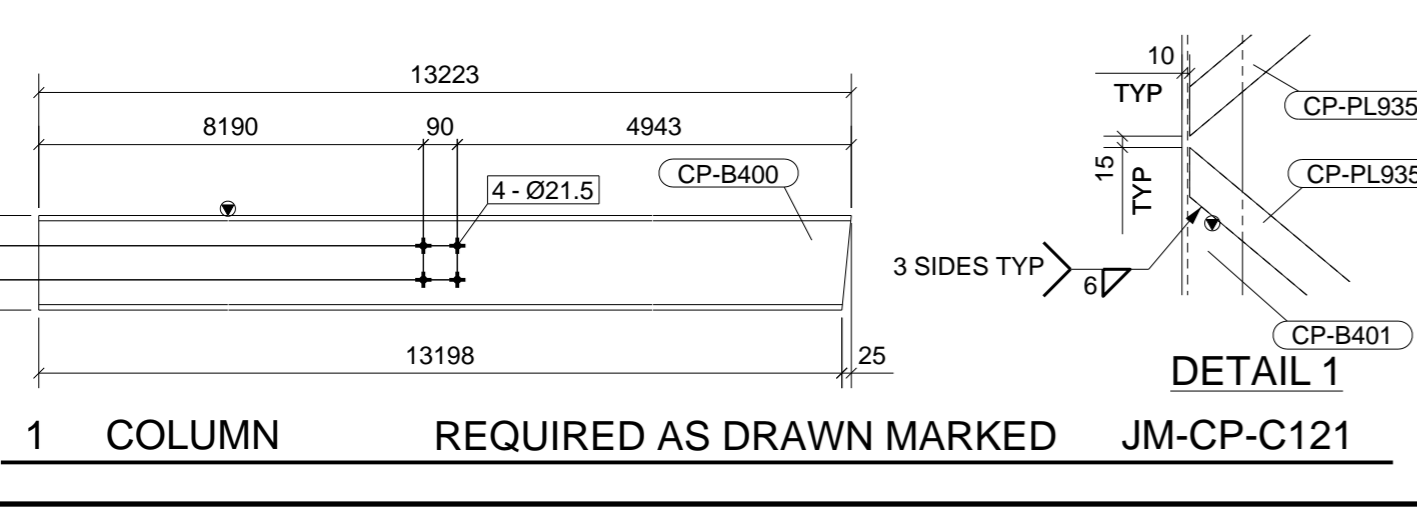
**BOLT LIST FOR ASSEMBLY JM-CP-C121 No. 1**

Diam	Grade	Type	Length	No	Member
6					
8					
10					

**LOCATION LIST**

MARK NO.	GRID LOCATION
JM-CP-C121	A2-3, EL+13.878

**NOTES:**  
 1. ALL DIMENSIONS ARE IN mm.(UNO)  
 2. ALL LEVELS ARE IN m.(UNO)  
 3. FOR GENERAL NOTES, PLEASE REFER DRAWING NO. - 1655-06-6500-L001



REF. DWG. NO.	REFERENCE DRAWING TITLE
1655-06-6102-E-001	COLUMN MARKING LAYOUT A1 & B2
1655-06-6102-E-002	ELEVATION ALONG GRID - A-C & D
1655-06-6102-E-003	ELEVATION ON GRID - A-C & D
1655-06-6102-E-004	ELEVATION ALONG GRID - B & C BETWEEN GRID 1 & 2
1655-06-6102-E-005	ELEVATION ALONG GRID - D & E BETWEEN GRID 1 & 2
1655-06-6102-E-006	ELEVATION ALONG GRID - F BETWEEN GRID 1 & 2
1655-06-6102-E-007	PLAN SHOWING BRACINGS - TOP AND BOTTOM CHORD BRACING
1655-06-6102-E-008	MARKING LAYOUT OF ROOF PURLIN BETWEEN GRID 1 & 2
1655-06-6102-E-009	MARKING LAYOUT OF ROOF PURLIN BETWEEN GRID 2 & 3
1655-06-6102-E-010	PLAN SHOWING BRACINGS - TOP AND BOTTOM CHORD BRACING
1655-06-6102-E-011	ELEVATION ALONG GRID - B & C BETWEEN GRID 2 & 3
1655-06-6102-E-012	MARKING LAYOUT OF ROOF PURLIN BETWEEN GRID 2 & 3
1655-06-6102-E-013	MARKING LAYOUT OF ROOF PURLIN BETWEEN GRID 3 & 5
1655-06-6102-E-014	PLAN SHOWING BRACINGS - TOP AND BOTTOM CHORD BRACING
1655-06-6102-E-015	ELEVATION ALONG GRID - 3
1655-06-6102-E-016	ELEVATION ALONG GRID - 4
1655-06-6102-E-017	ELEVATION ALONG GRID - 5
1655-06-6102-E-018	ELEVATION ALONG GRID - 6
1655-06-6102-E-019	ELEVATION ALONG GRID - 7
1655-06-6102-E-020	ELEVATION ALONG GRID - 8

**CONSULTANT**  
**Aker Solutions<sup>®</sup>**  
 Powersgas House, iTHINK Techno Campus, Kanjur Marg (East), Mumbai 400 042, India

**CLIENT**  
**JM** JOHN SON MATTHEY Chemicals India Pvt. Ltd.  
 JOICI INDIA LTD. Pankaj Works.

**CONTRACTOR**  
**CC** CONSOLIDATED CONSTRUCTION CONSORTIUM LTD.  
 REGISTERED OFF: 45-2nd LNK STREET, CLT COLONY MYPALORE, CHENNAI-600 004 INDIA

REV.	DATE	REVISIONS	BY	CHKD	APPD
1	20.07.2010	REVISED AS MARKED	CA	RJ	JRR
0	03.07.2010	ISSUED FOR APPROVAL	CA	RJ	JRR

**PROJECT**  
**JMC PLANT (COLT)**

**TITLE**  
**COLT PLANT DETAIL OF COLUMN**

**SCALE**  
 1:10

**JOB NO.**  
 DC 67

**DWG. NO.**  
 JM-CP-C121

**REV.**  
 1