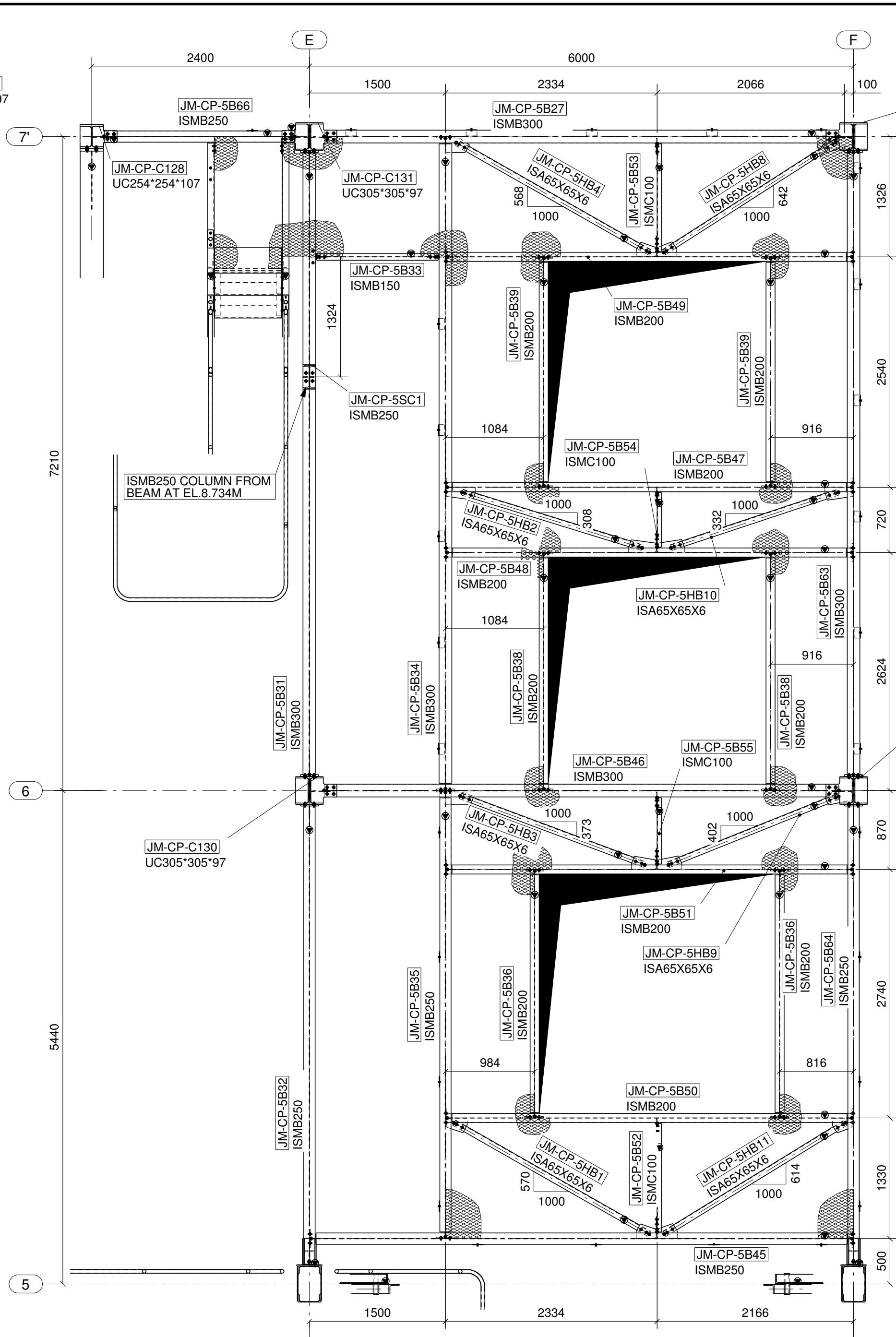
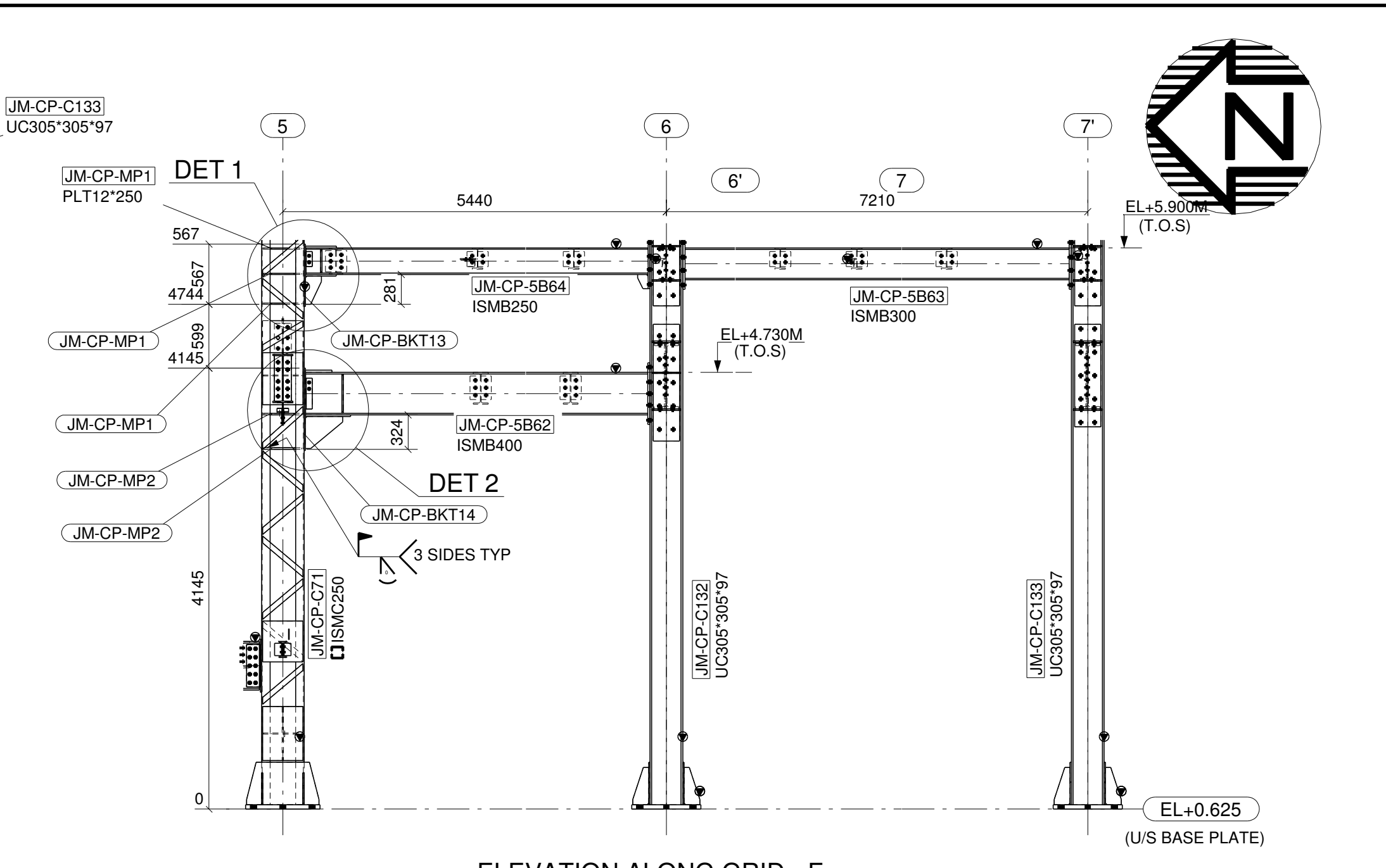


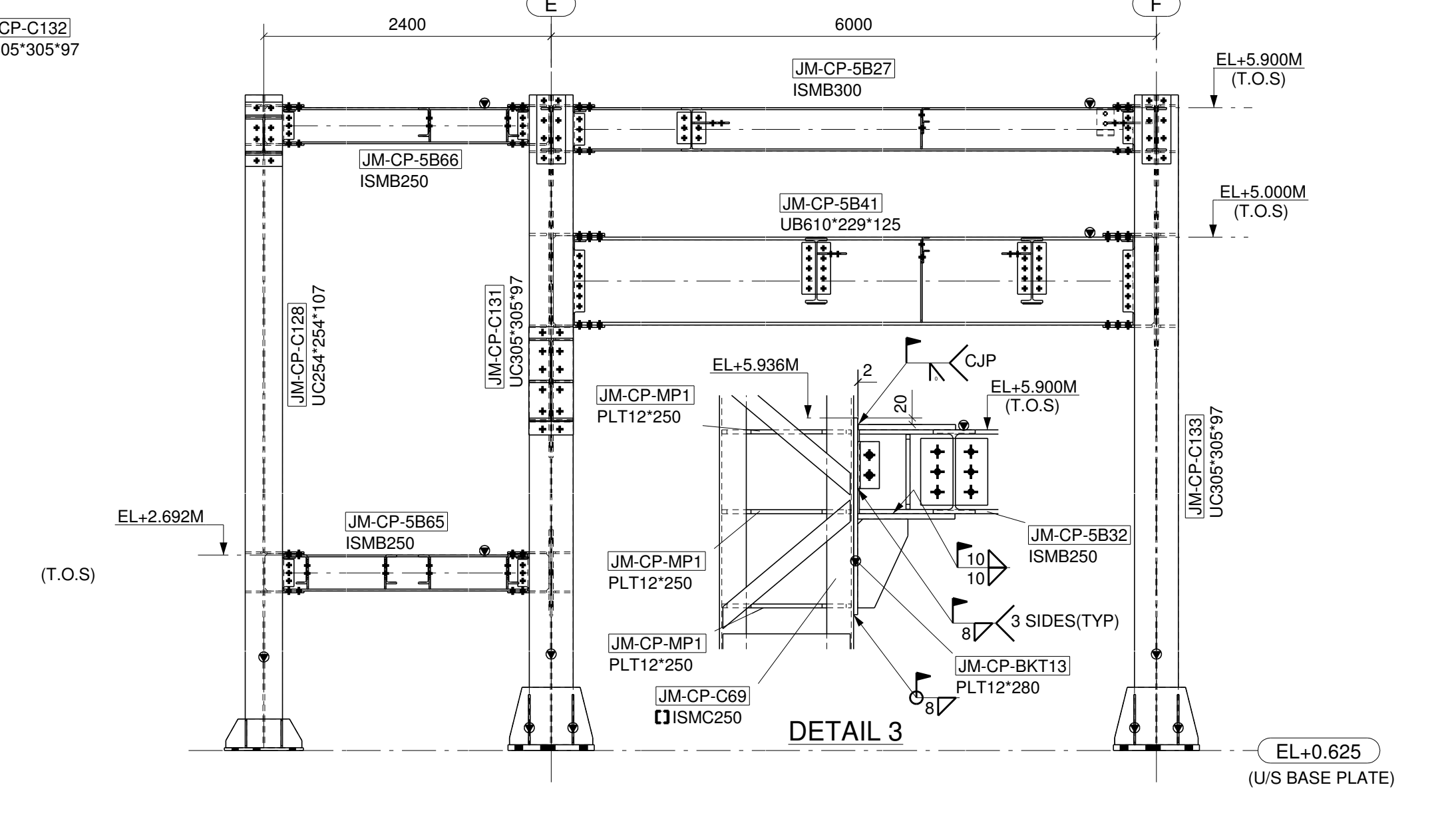
LAYOUT AT EL 5.000 (TOS) (UNO)
REF. DRGS. 1655-06-6102-L079_R1
ALL PLAN BRACING ARE @-120 (T.O.S) UNO



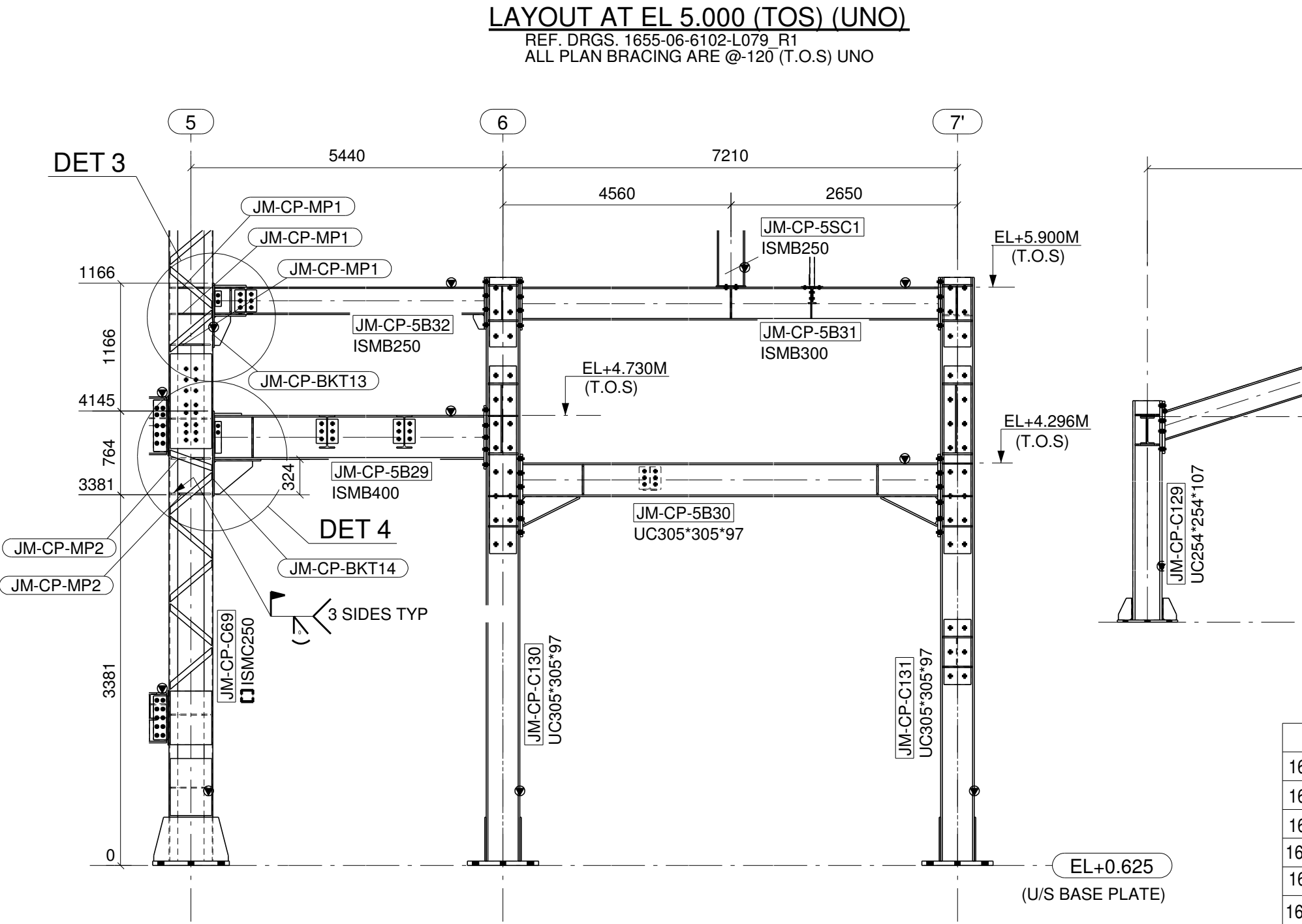
LAYOUT AT EL 5.900 (TOS) (UNO)
REF. DRGS. 1655-06-6102-L079_R1
ALL PLAN BRACING ARE @-110 (T.O.S) UNO



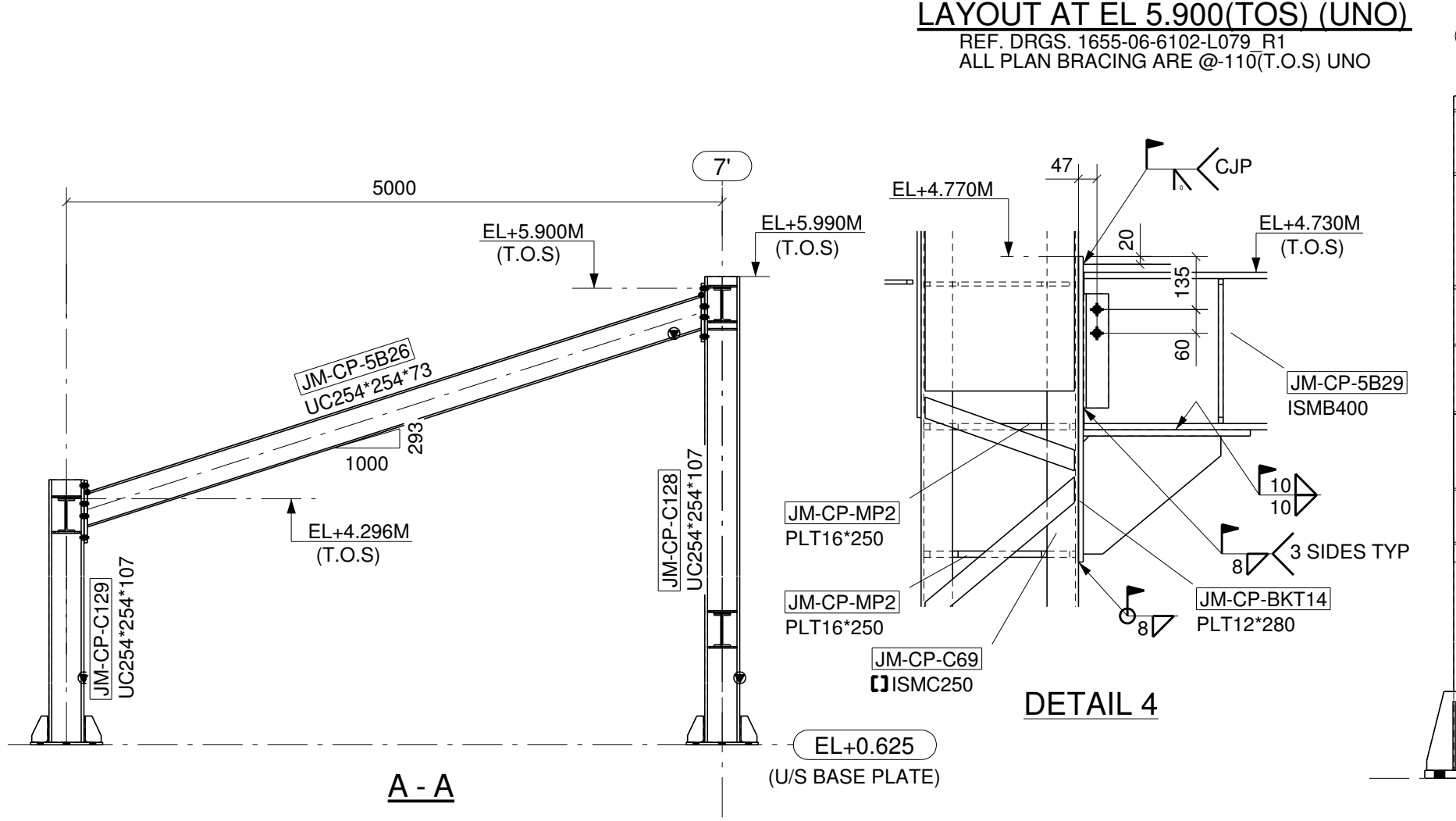
ELEVATION ALONG GRID - F
REF. DRGS. 1655-06-6102-L079_R1



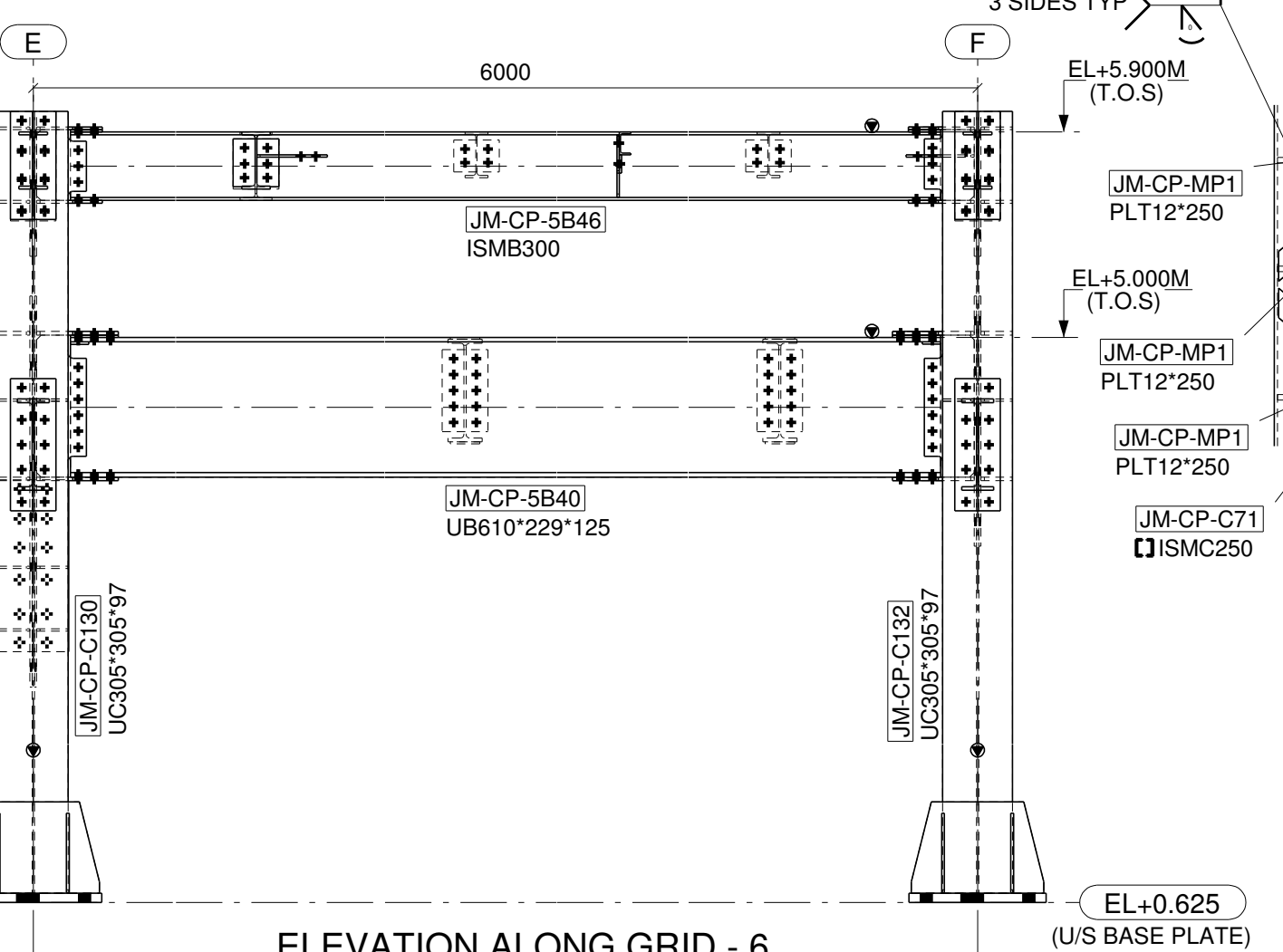
ELEVATION ALONG GRID - 7
REF. DRGS. 1655-06-6102-L079_R1



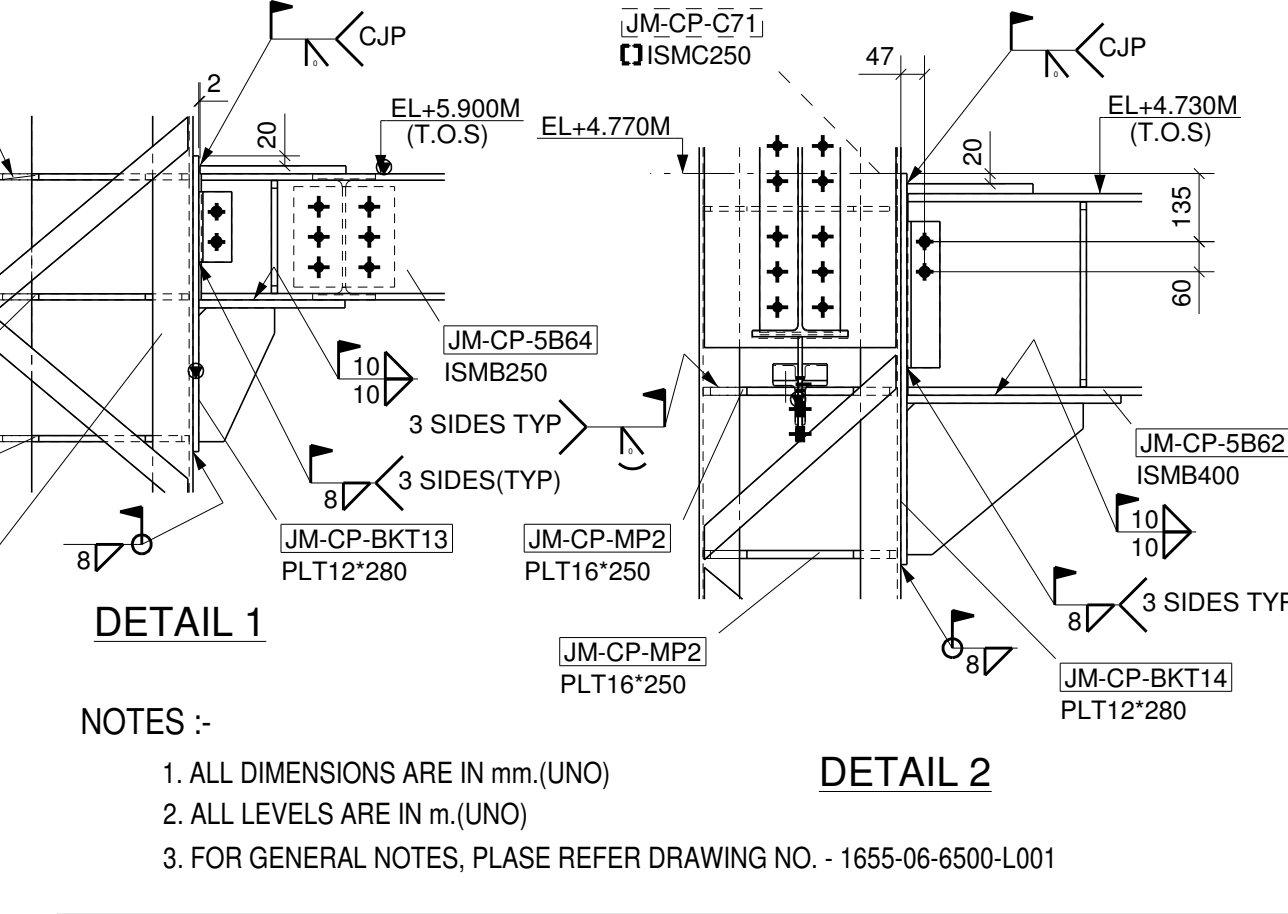
ELEVATION ALONG GRID - E
REF. DRGS. 1655-06-6102-L079_R1



A - A



ELEVATION ALONG GRID - 6
REF. DRGS. 1655-06-6102-L079_R1



DETAIL 1

- NOTES :-
1. ALL DIMENSIONS ARE IN mm.(UNO)
 2. ALL LEVELS ARE IN m.(UNO)
 3. FOR GENERAL NOTES, PLEASE REFER DRAWING NO. - 1655-06-6500-L001

DETAIL 2

| REF. DWG. NO. | REFERENCE DRAWING TITLE | REF. DWG. NO. | REFERENCE DRAWING TITLE |
|----------------------|-------------------------|----------------------|--------------------------------------|
| 1655-06-6102-L009_R1 | BASE PLATE LAYOUT | 1655-06-6102-L019_R0 | ELEVATION ON GRID D |
| 1655-06-6102-L010_R0 | BASE PLATE DETAILS | 1655-06-6102-L020_R1 | ELEVATION ON GRID E & F |
| 1655-06-6102-L011_R0 | BASE PLATE DETAILS | 1655-06-6102-L021_R1 | ELEVATION ON GRID G & H |
| 1655-06-6102-L012_R1 | ELEVATION ON GRID 1&2 | 1655-06-6102-L023_R1 | ROOF LAYOUT BETWEEN GRID 1& 2 |
| 1655-06-6102-L013_R1 | ELEVATION ON GRID 3 | 1655-06-6102-L024_R1 | TRUSS DETAILS BETWEEN GRID 1& 2 |
| 1655-06-6102-L014_R0 | ELEVATION ON GRID 4 | 1655-06-6102-L025_R1 | ROOF LAYOUT BETWEEN GRID 2& 3 |
| 1655-06-6102-L015_R0 | ELEVATION ON GRID 5 | 1655-06-6102-L026_R1 | TRUSS DETAILS BETWEEN GRID 2& 3 |
| 1655-06-6102-L016_R1 | ELEVATION ON GRID A | 1655-06-6102-L027_R1 | ROOF LAYOUT BETWEEN GRID 3& 5 |
| 1655-06-6102-L017_R0 | ELEVATION ON GRID B | 1655-06-6102-L028_R0 | TRUSS DETAILS BETWEEN GRID 3& 5 |
| 1655-06-6102-L018_R0 | ELEVATION ON GRID C | 1655-06-6102-L029_R0 | TRUSS DETAILS BETWEEN GRID 2-3 & G-H |

CONSULTANT **AkerSolutions**
Powergas House, iTHINK Techno Campus, Kanjur Marg (East), Mumbai 400 042, India

CLIENT **JOHNSON MATTHEY** Chemicals India Pvt. Ltd.
C/o ICI INDIA LTD. Park Road, Worli

CONTRACTOR **CONSOLIDATED CONSTRUCTION CONSORTIUM LTD.**
REGISTERED OFF: #5 - 2nd LINK STREET, C.I.T COLONY
MYPALORE, CHENNAI - 600 004 INDIA

| REV. | DATE | REVISIONS | BY | CHKD | APPD |
|------|------------|---|----|------|------|
| 1 | 12.10.2010 | REVISED AS PER COMMENTS & ISSUED FOR CONSTRUCTION | CA | RJ | JRR |
| 0 | 30.09.2010 | ISSUED FOR APPROVAL | CA | RJ | JRR |

PROJECT **JMC PLANT (COLT)**

TITLE **COLT PLANT LAYOUT AT 5.000 (TOS) & EL 5.900 (TOS)**

| SCALE | JOB NO. | DWG. NO. | REV. |
|-------|---------|--------------------|------|
| 1:15 | DC 67 | 1655-06-6102-E-063 | 1 |